

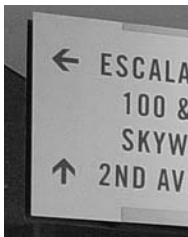


## ADAAG Minimum Sign Requirements

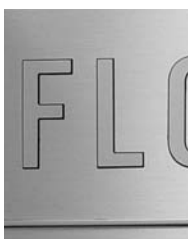


Building Signage Systems  
To Your Specifications

	Permanent Rooms & Spaces	Directional/Informational	Overhead	Temporary
<p><b>Tactile and Braille Characters</b>            Characters must be raised minimum 1/32"            Characters must be accompanied by Grade 2 Braille</p>	● ●			e x e m p t
<p><b>Typetypes</b>            Characters must be upper case and san serif or serif typestyle            Characters must have a width-to-height ratio between 3:5 and 1:1            Characters must have a stroke width-to-height ratio between 1:5 and 1:10</p>	●	● ●	● ●	
<p><b>Character Height</b>            Tactile characters must be a minimum 5/8" high, maximum 2", all caps            Characters must be minimum 3" high            Characters must be sized to viewing distance</p>	●	●	●	
<p><b>Pictograms (Symbols)</b>            Equivalent written description must be placed directly below symbol            Written description cannot be within symbol's background field            Border dimension of symbol background field must be minimum, 6" high</p>	● ● ●			
<p><b>Finish and Contrast</b>            Characters and background must be eggshell, matte or other non-glare finish            Characters must adequately contrast with background</p>	● ●	● ●	● ●	
<p><b>Mounting Location and Height</b>            Mounted on wall adjacent to the latch side of the door            Mounted to avoid door swing and protruding objects            Mounting height of 60" from floor to centerline of sign            Minimum 80" clearance between overhead sign and floor</p>	● ● ●		●	



# ADAAG Minimum Sign Requirements



## ADA Accessibility Guidelines (ADAAG)

### 4.30 Signage.

**4.30.1 General.** Signage required to be accessible by 4.1 shall comply with the applicable provisions of 4.30.

#### Appendix Note

**4.30.2 Character Proportion.** Letters and numbers on signs shall have a width-to-height ratio between 3:5 and 1:1 and a stroke-width-to-height ratio between 1:5 and 1:10. **Appendix Note**

**4.30.3 Character Height.** Characters and numbers on signs shall be sized according to the viewing distance from which they are to be read. The minimum height is measured using an uppercase X. Lower case characters are permitted.



Building Signage Systems  
To Your Specifications

#### Height Above Finished Floor

Suspended or Projected Overhead in compliance with 4.4.2

#### Minimum Character Height

3 in (75 mm) minimum

**4.30.4 Raised and Brailled Characters and Pictorial Symbol Signs (Pictograms).** Letters and numerals shall be raised 1/32 in (0.8 mm) minimum, upper case, sans serif or simple serif type and shall be accompanied with Grade 2 Braille. Raised characters shall be at least 5/8 in (16 mm) high, but no higher than 2 in (50 mm). Pictograms shall be accompanied by the equivalent verbal description placed directly below the pictogram. The border dimension of the pictogram shall be 6 in (152 mm) minimum in height. **Appendix Note**

**4.30.5 Finish and Contrast.** The characters and background of signs shall be eggshell, matte, or other non-glare finish. Characters and symbols shall contrast with their background—either light characters on a dark background or dark characters on a light background. **Appendix Note**

**4.30.6 Mounting Location and Height.** Where permanent identification is provided for rooms and spaces, signs shall be installed on the wall adjacent to the latch side of the door. Where there is no wall space to the latch side of the door, including at double leaf doors, signs shall be placed on the nearest adjacent wall. Mounting height shall be 60 in (1525 mm) above the finish floor to the centerline of the sign. Mounting location for such signage shall be so that a person may approach within 3 in (76 mm) of signage without encountering protruding objects or standing within the swing of a door.

### 4.30.7 Symbols of Accessibility.

(1) Facilities and elements required to be identified as accessible by 4.1 shall use the international symbol of accessibility. The symbol shall be displayed as shown in Fig. 43(a) and (b).

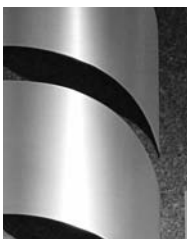
(2) Volume Control Telephones. Telephones required to have a volume control by 4.1.3(17)(b) shall be identified by a sign containing a depiction of a telephone handset with radiating sound waves.

(3) Text Telephones (TTYs). Text telephones (TTYs) required by 4.1.3(17)(c) shall be identified by the international TTY symbol (Fig 43(c)). In addition, if a facility has a public text telephone (TTY), directional signage indicating the location of the nearest text telephone (TTY) shall be placed adjacent to all banks of telephones which do not contain a text telephone (TTY). Such directional signage shall include the international TTY symbol. If a facility has no banks of telephones, the directional signage shall be provided at the entrance (e.g., in a building directory).

(4) Assistive Listening Systems. In assembly areas where permanently installed assistive listening systems are required by 4.1.3(19)(b) the availability of such systems shall be identified with signage that includes the international symbol of access for hearing loss (Fig 43(d)). **Appendix Note**

**4.30.8 Illumination Levels.** (Reserved). **Appendix Note**

# Guideline (ADAAG)



## ADA Accessibility Guidelines (ADAAG)

### A4.30 Signage.

**A4.30.1 General.** In building complexes where finding locations independently on a routine basis may be a necessity (for example, college campuses), tactile maps or prerecorded instructions can be very helpful to visually impaired people. Several maps and auditory instructions have been developed and tested for specific applications. The type of map or instructions used must be based on the information to be communicated, which depends highly on the type of buildings or users.

Landmarks that can easily be distinguished by visually impaired individuals are useful as orientation cues. Such cues include changes in illumination level, bright colors, unique patterns, wall murals, location of special equipment or other architectural features.

Many people with disabilities have limitations in movement of their heads and reduced peripheral vision. Thus, signage positioned perpendicular to the path of travel is easiest for them to notice. People can generally distinguish signage within an angle of 30 degrees to either side of the centerlines of their faces without moving their heads.

**A4.30.2 Character Proportion.** The legibility of printed characters is a function of the viewing distance, character height, the ratio of the stroke width to the height of the character, the contrast of color between character and background, and print font. The size of characters must be based upon the intended viewing distance. A severely nearsighted person may have to be much closer to recognize a character of a given size than a person with normal visual acuity.

**A4.30.4 Raised and Brailled Characters and Pictorial Symbol Signs (Pictograms).** The standard dimensions for literary Braille are as follows:

**Dot diameter: .059 in.**

**Inter-dot spacing: .090 in.**

**Horizontal separation between cells: .241 in.**

**Vertical separation between cells: .395 in.**

Raised borders around signs containing raised characters may make them confusing to read unless the border is set far away from the characters. Accessible signage with descriptive materials about public buildings, monuments, and objects of cultural interest may not provide sufficiently detailed and meaningful information. Interpretive guides, audio tape devices, or other methods may be more effective in presenting such information.

**A4.30.5 Finish and Contrast.** An eggshell finish (11 to 19 degree gloss on 60 degree glossimeter) is recommended. Research indicates that signs are more legible for persons with low vision when characters contrast with their background by at least 70 percent. Contrast in percent shall be determined by:

$$\text{Contrast} = [(B_1 - B_2)/B_1] \times 100$$

where  $B_1$  = light reflectance value (LRV) of the lighter area and  $B_2$  = light reflectance value (LRV) of the darker area.

Note that in any application both white and black are never absolute; thus,  $B_1$  never equals 100 and  $B_2$  is always greater than 0.

The greatest readability is usually achieved through the use of light-colored characters or symbols on a dark background.



Building Signage Systems  
To Your Specifications



# Guideline (ADAAG)

## ADA Accessibility Guidelines (ADAAG)

**A4.30.7 Symbols of Accessibility for Different Types of Listening Systems.** Paragraph 4 of this section requires signage indicating the availability of an assistive listening system. An appropriate message should be displayed with the international symbol of access for hearing loss since this symbol conveys general accessibility for people with hearing loss. Some suggestions are:

INFRARED  
ASSISTIVE LISTENING SYSTEM  
AVAILABLE  
---PLEASE ASK---

AUDIO LOOP IN USE  
TURN T-SWITCH FOR  
BETTER HEARING  
---OR ASK FOR HELP---

FM  
ASSISTIVE LISTENING  
SYSTEM AVAILABLE  
---PLEASE ASK---



Building Signage Systems  
To Your Specifications

The symbol may be used to notify persons of the availability of other auxiliary aids and services such as: real-time captioning, captioned note taking, sign language interpreters, and oral interpreters.

**A4.30.8 Illumination Levels.** Illumination levels on the sign surface shall be in the 100 to 300 lux range (10 to 30 footcandles) and shall be uniform over the sign surface. Signs shall be located such that the illumination level on the surface of the sign is not significantly exceeded by the ambient light or visible bright lighting source behind or in front of the sign.

Current guidelines as of July 2004

# Guideline (ADAAG)





Building Signage Systems  
To Your Specifications

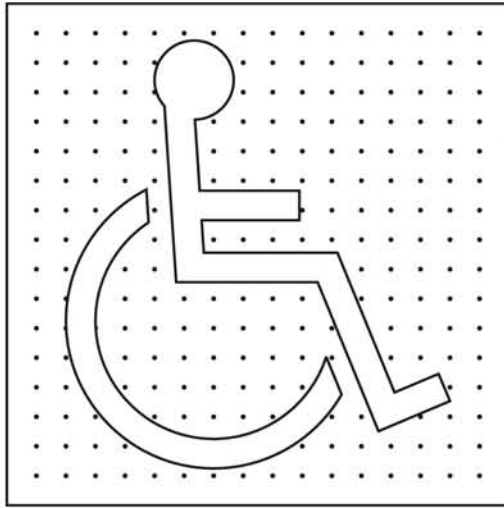


Fig. 43(a)  
Proportions  
International Symbol  
of Accessibility



Fig. 43(b)  
Display Conditions  
International Symbol  
of Accessibility



Fig. 43(c)  
International TDD Symbol



Fig. 43(d)  
International Symbol of  
Access for Hearing Loss



## Uniform Building Code Standard No. 33-2 Stairway Identification

**Specification Standard of the International Conference of Building Officials See Section 3306 (q), Uniform Building Code**

**Purpose**  
**Sec. 33.201.**

The purpose of this standard is to provide information to the occupants and fire department personnel to ensure that they do not become confused during emergencies, by requiring that standardized signs be installed in stairways to inform the user which stair landing he is on and the upper and lower termination of the stairway.

**Scope**  
**Sec. 33.202.**

The provisions of this standard shall apply to buildings four or more stories in height.

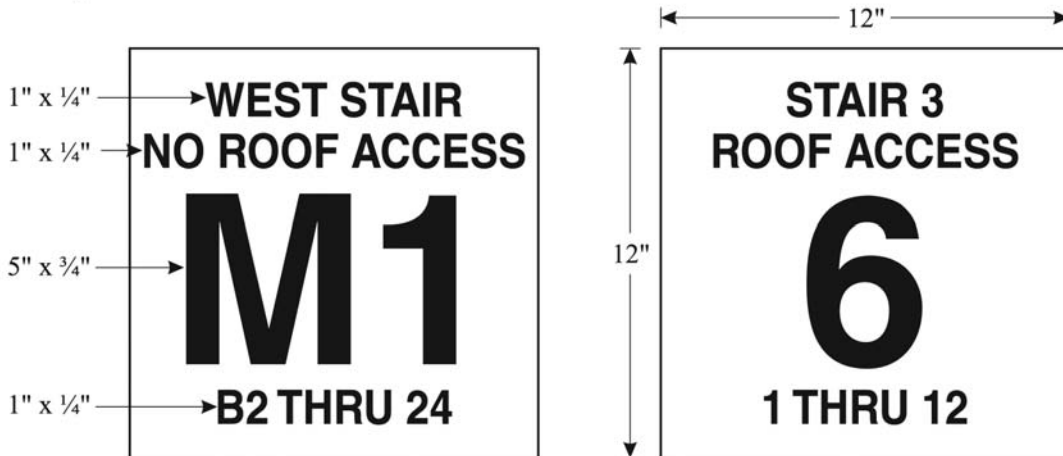
**Sign**  
**Sec. 33.203.**

Signs shall conform to the following:

1. The sign shall be a minimum 12 inches x 12 inches
2. The stairway location shall be placed at the top of the sign in 1 inch high block lettering with 1/4 inch stroke.
3. The stairway's upper terminus shall be placed under the stairway identification in 1 inch high block lettering with 1/4 inch stroke (roof access or no roof access).
4. The floor level number shall be placed in the middle of the sign in 5 inch high lettering with 3/4 inch stroke. The mezzanine levels shall have the letter "M" preceding the floor number. Basement levels shall have the letter "B" preceding the floor number.
5. The lower and upper terminus of the stairway shall be placed at the bottom of the sign in 1 inch high block lettering with 1/4 inch stroke.
6. These signs shall be maintained in an approved manner.

**Current guidelines as of July 2004**

**Examples:**



**Reproducible version found in Signage Systems and Specifications Section.**

